

# Holmes Building Systems, LLC

## Austin Hunt Series



© 2013 Holmes Building Systems, LLC

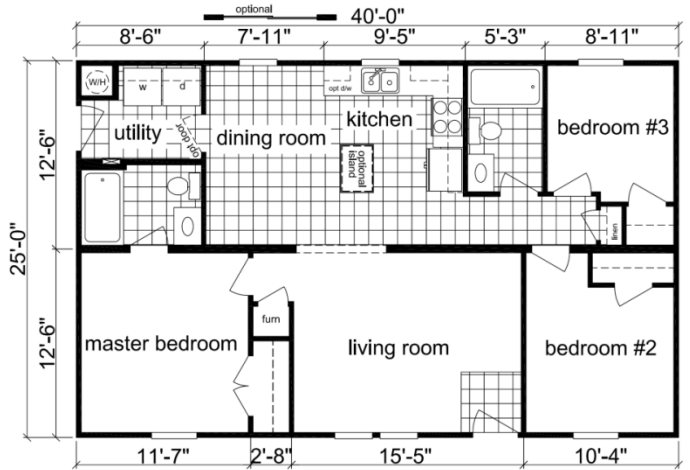


*Building A Better Home...*

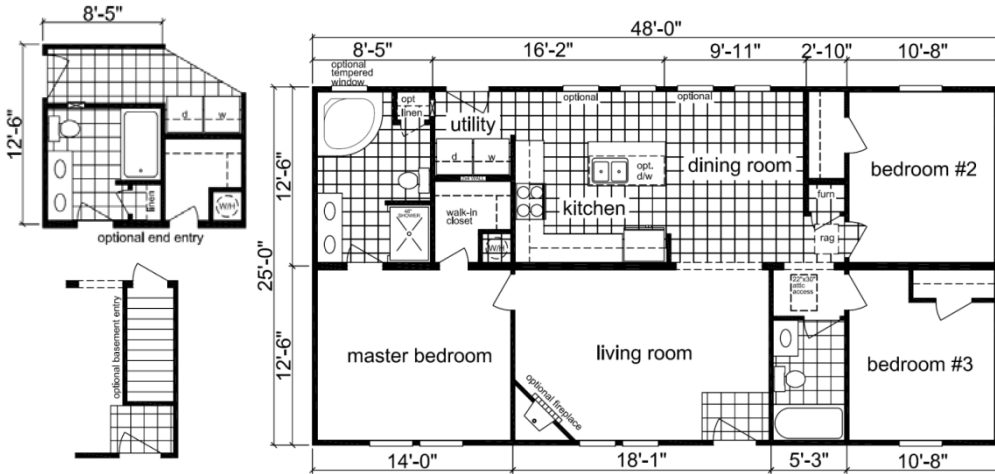




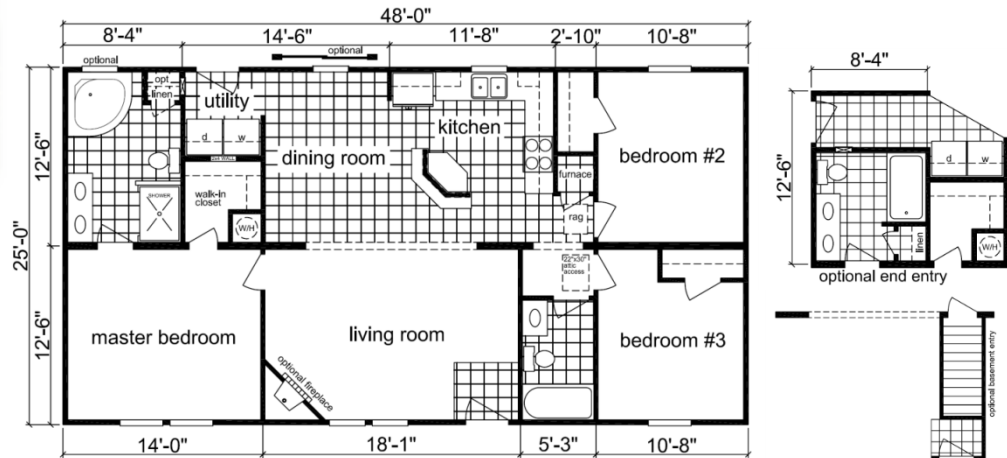
**Westmoore**  
2540A  
1000 sq ft

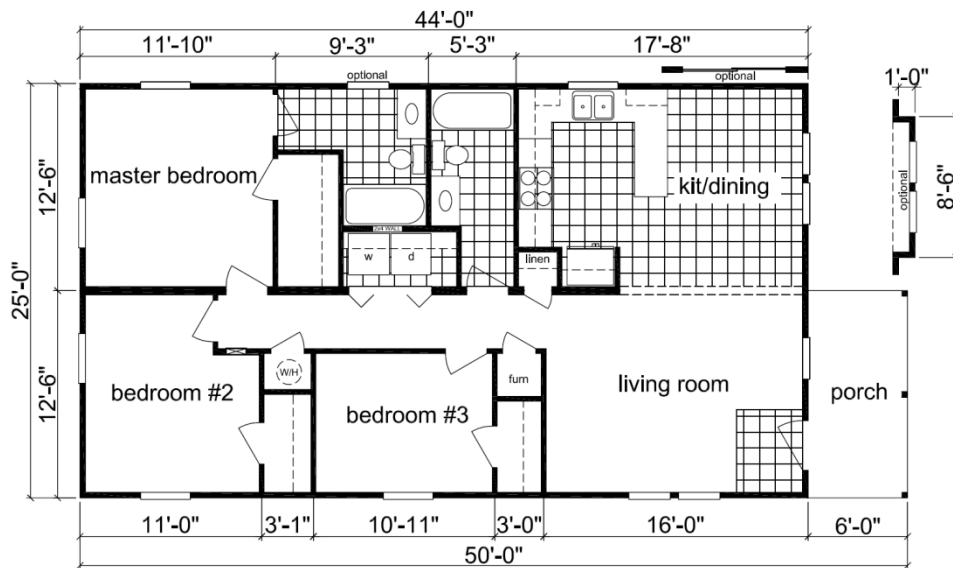


**Aberdeen**  
2548A  
1200 sq ft



**Eldorado**  
2548B  
1200 sq ft





## Eagle Springs

2550A

\*1175 sq ft

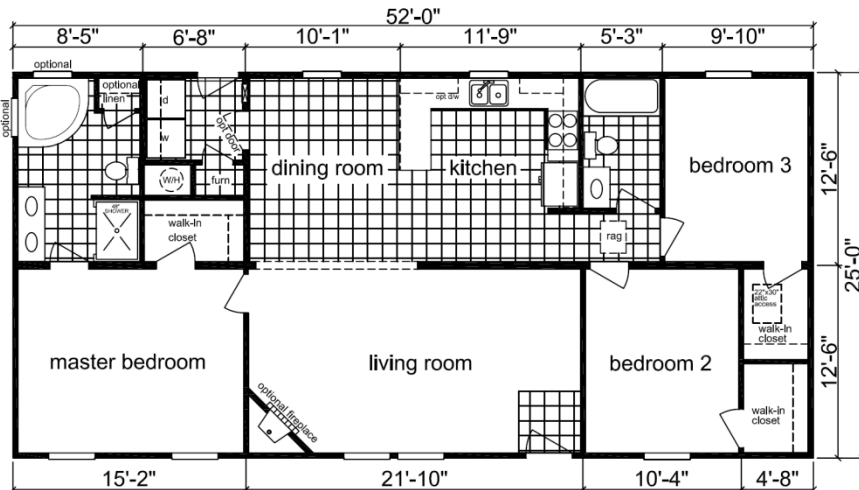
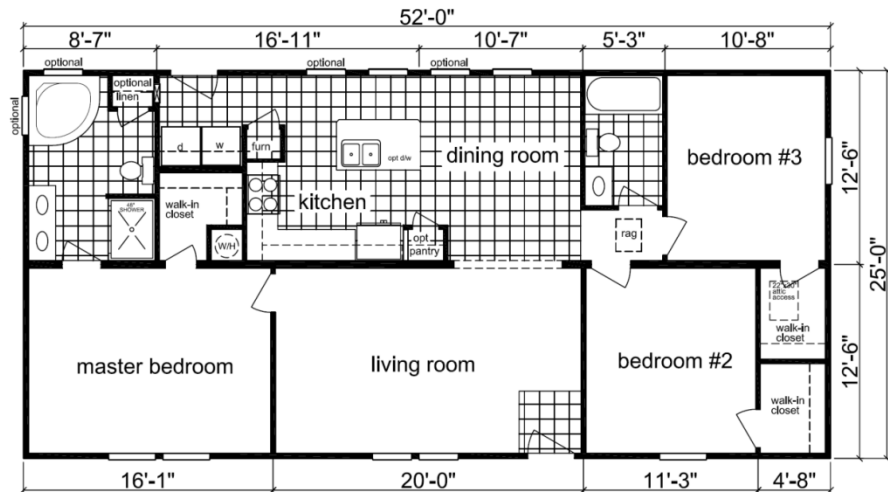
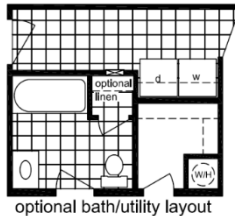
\*includes porch



## Candor

2552A

1300 sq ft



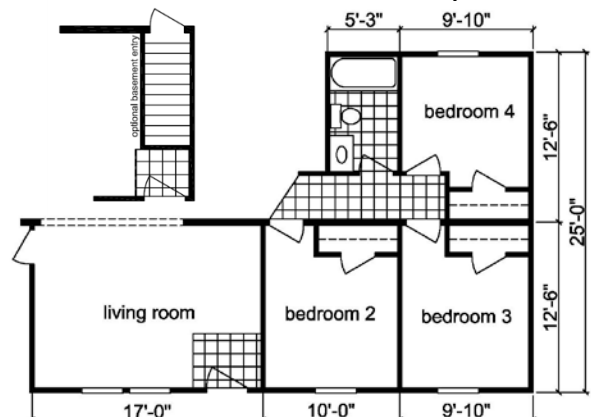
## Rose Hill

2552B

1300 sq ft



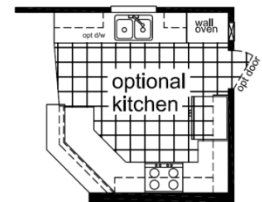
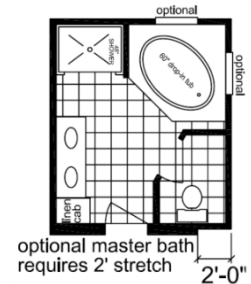
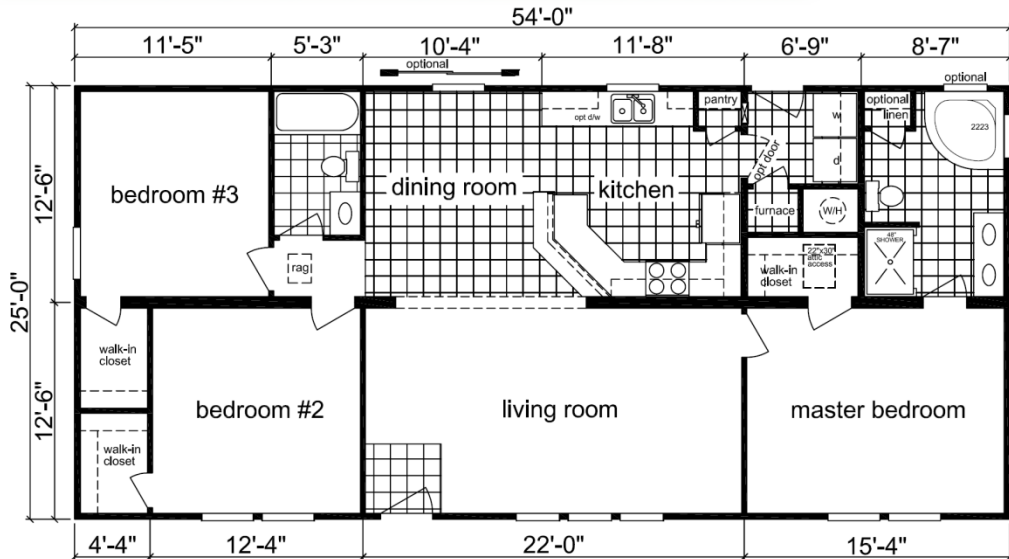
### 4th Bedroom Option



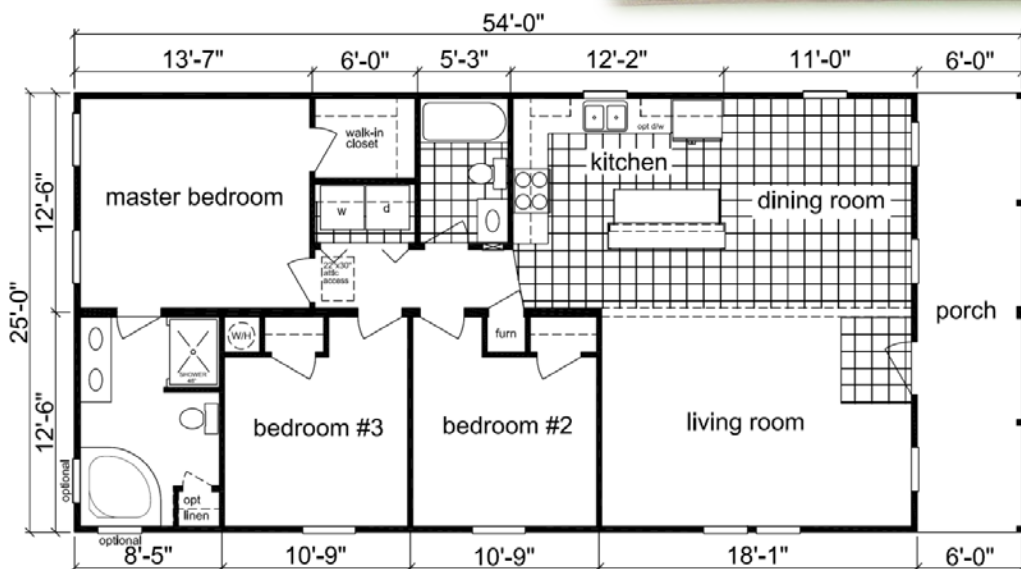


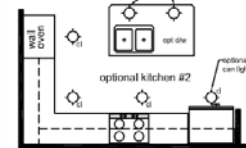


**New Hope**  
2554A  
1350 sq ft



**Brooksdale**  
2554B  
\*1350 sq ft  
\*includes porch

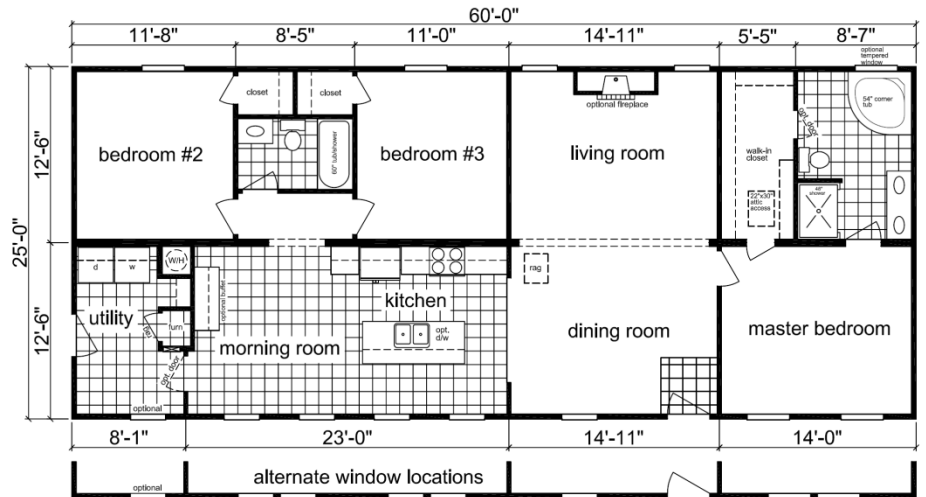
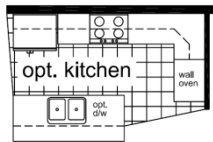
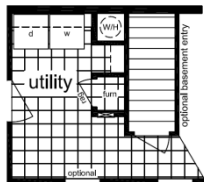




# Carthage

2560B

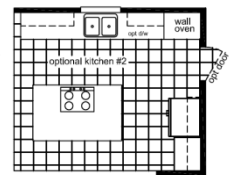
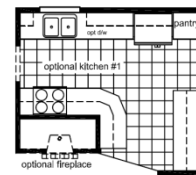
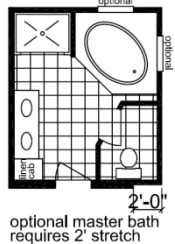
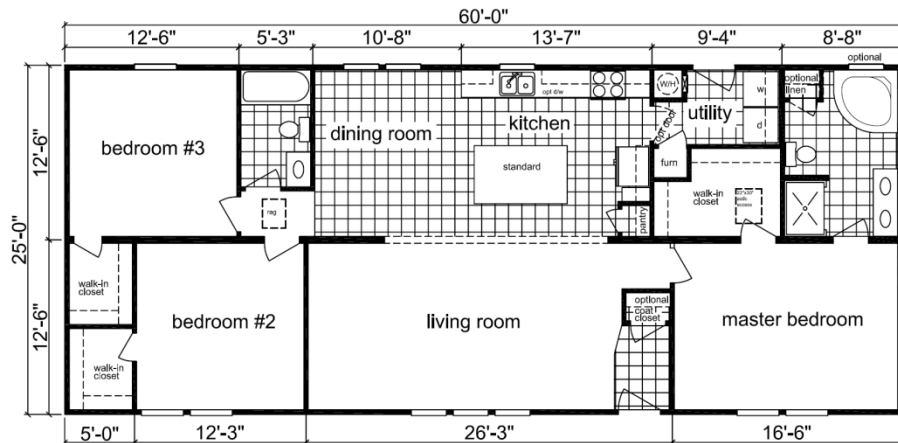
1500 sq ft



# Mooreville

2560D

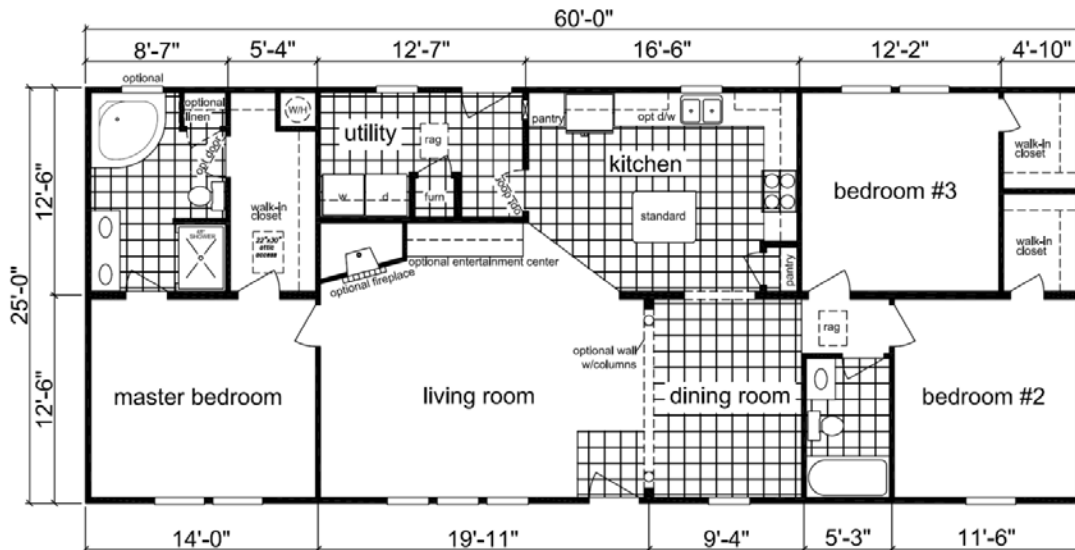
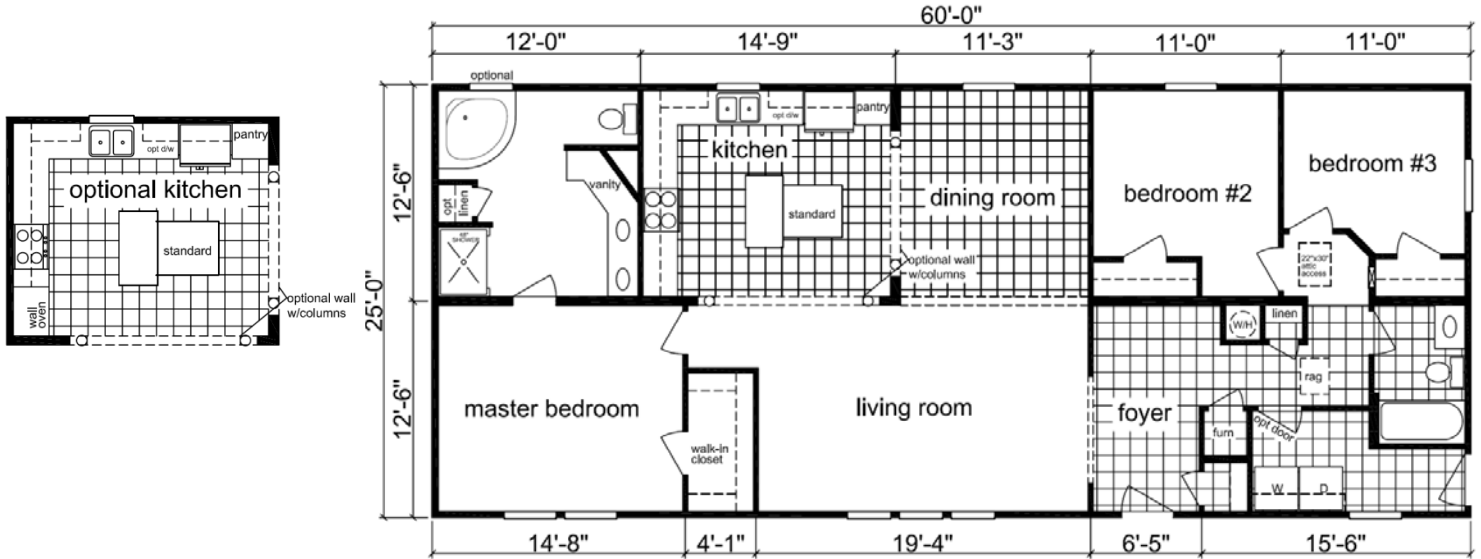
1500 sq ft







**Salisbury**  
2560E  
1500 sq ft

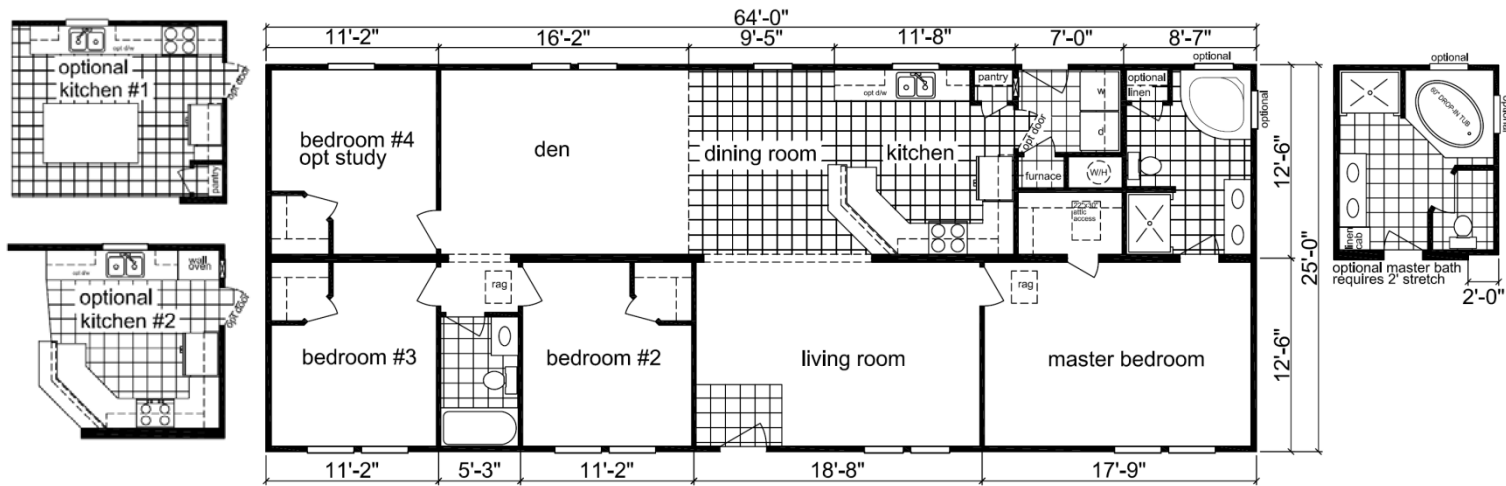


**Kannapolis**  
2560F  
1500 sq ft

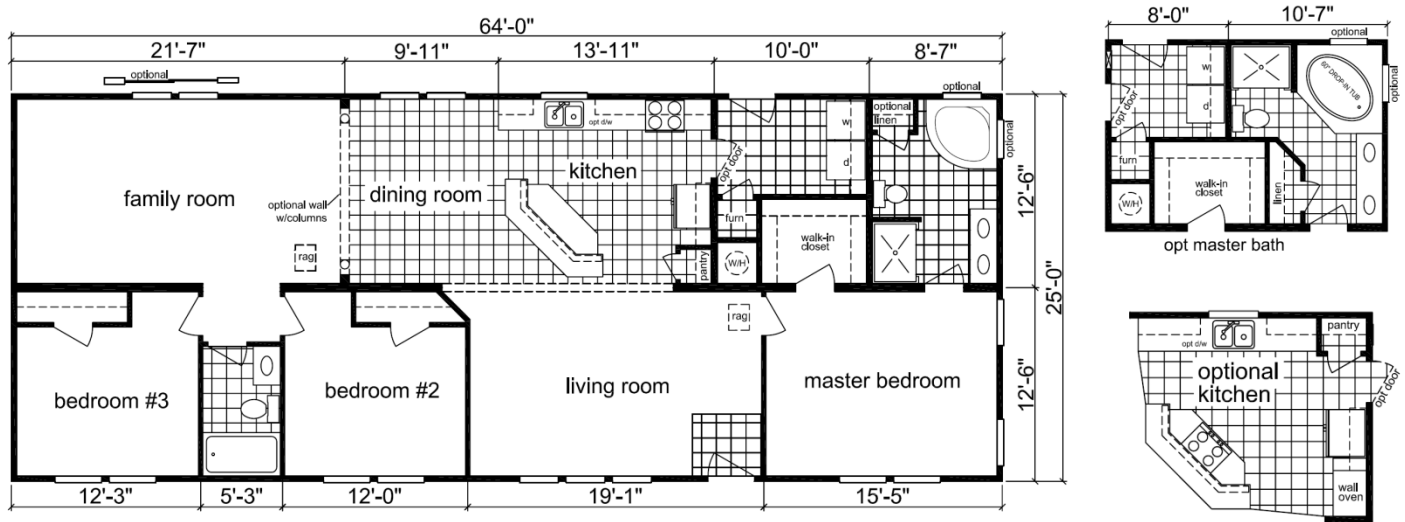




**Fontana**  
2564A  
1600 sq ft



**Cherryville**  
2564B  
1600 sq ft

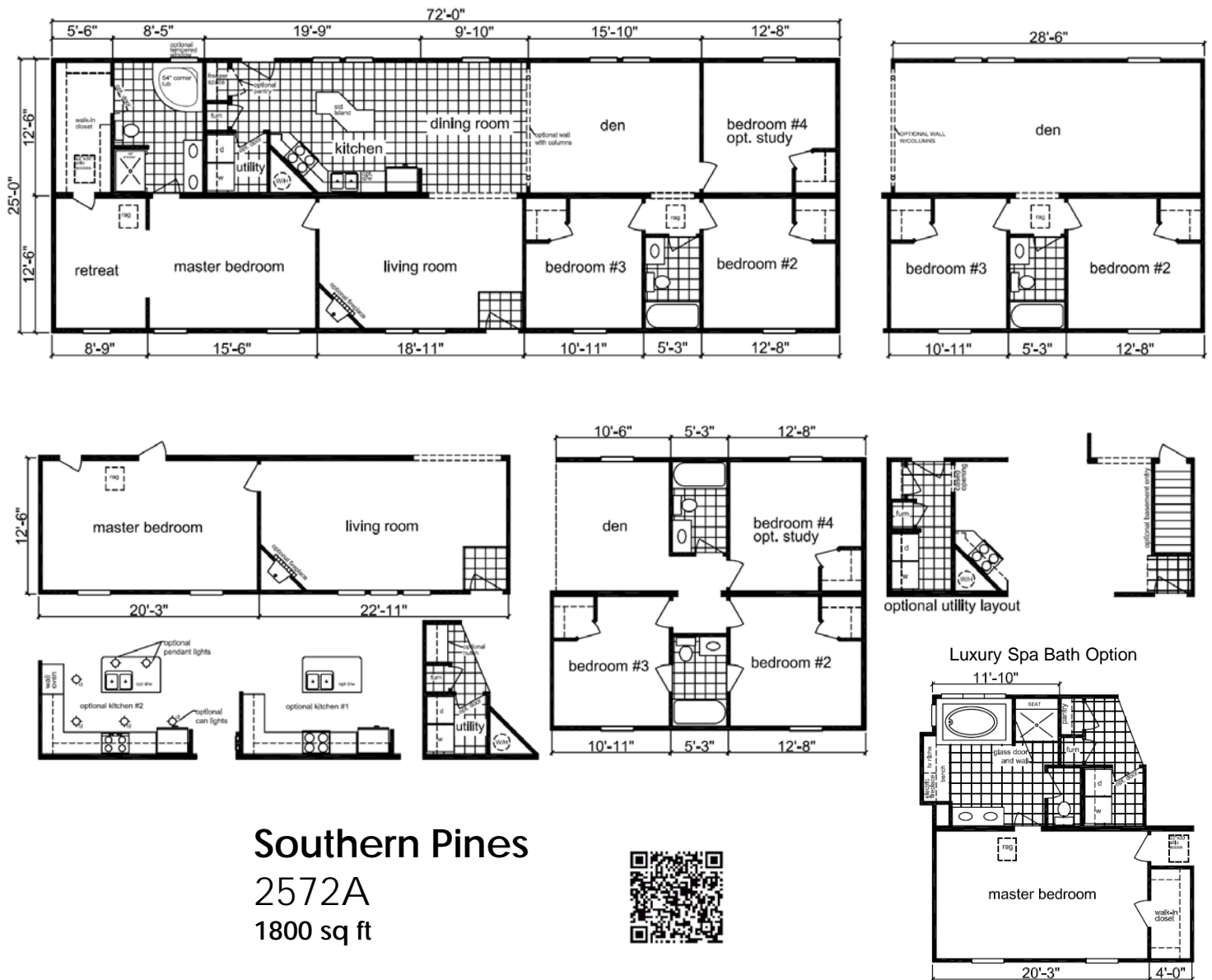






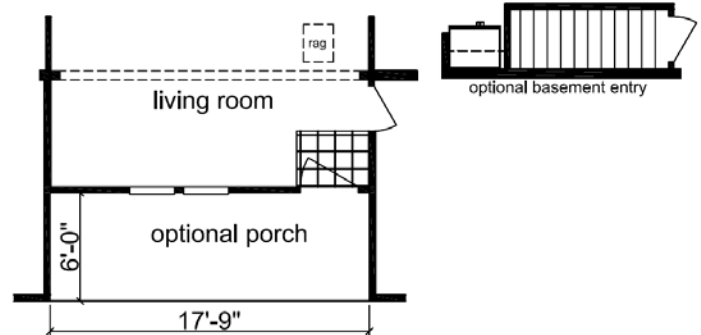
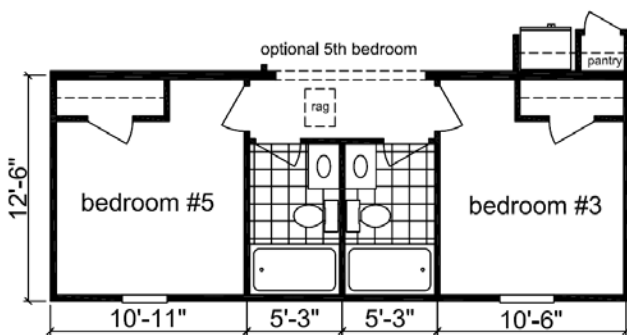
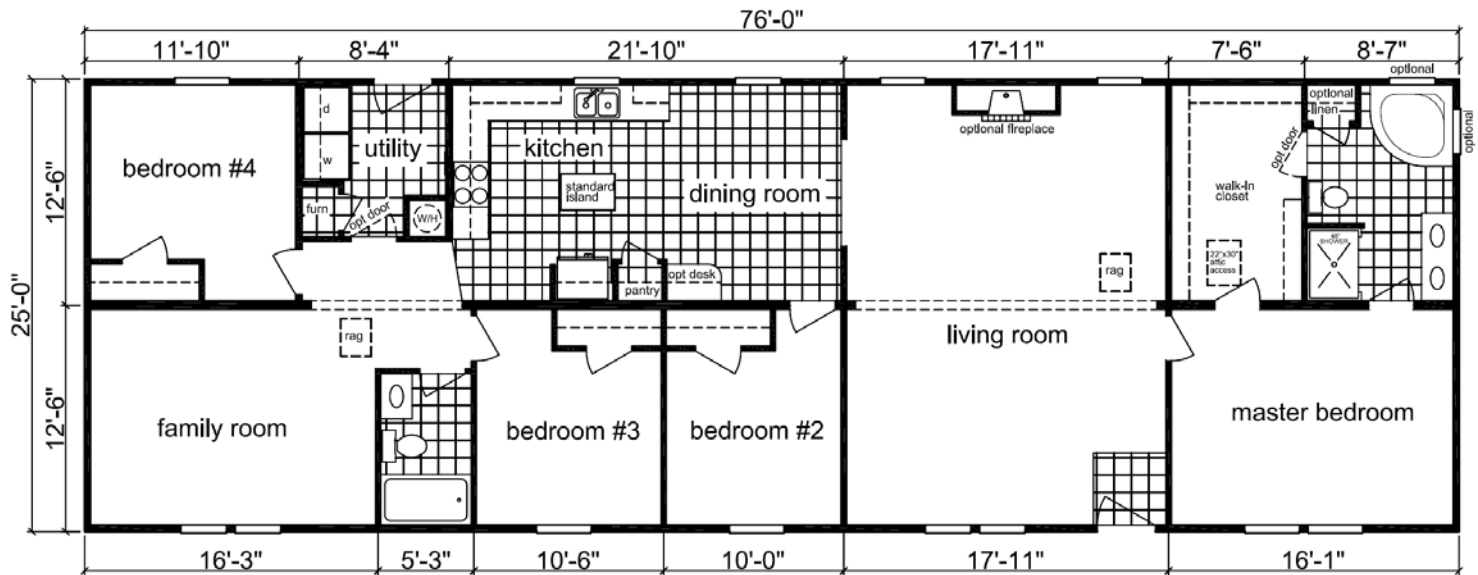
**Oakboro**  
2566A  
1650 sq ft





**Southern Pines**  
**2572A**  
**1800 sq ft**





**Ashley Heights**  
**2576A**  
**1900 sq ft**





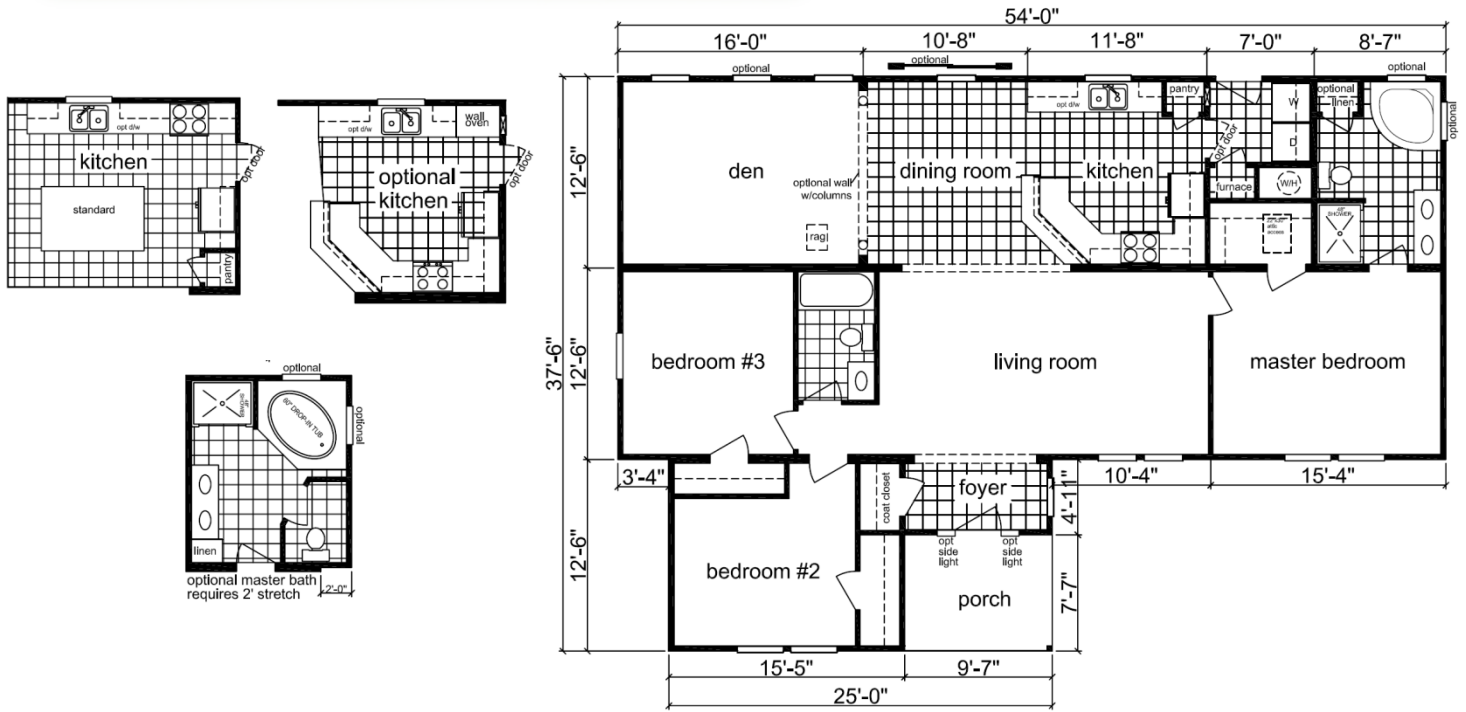


## Landis

3854A

\*1663 sq ft

\*includes porch



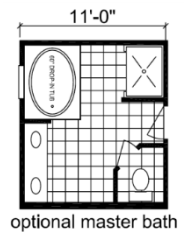
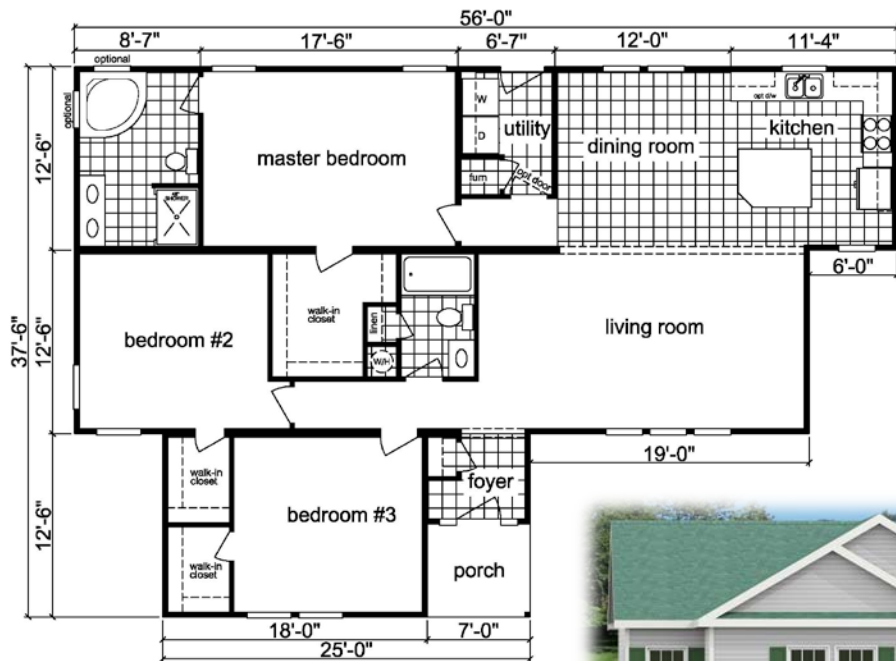
## Fayetteville

3856A

\*1563 sq ft

\*includes porch





**Biscoe**  
**3856B**  
 \*1638 sq ft  
 \*includes porch



**Raeford**  
**3860A**  
 \*1713 sq ft  
 \*includes porch

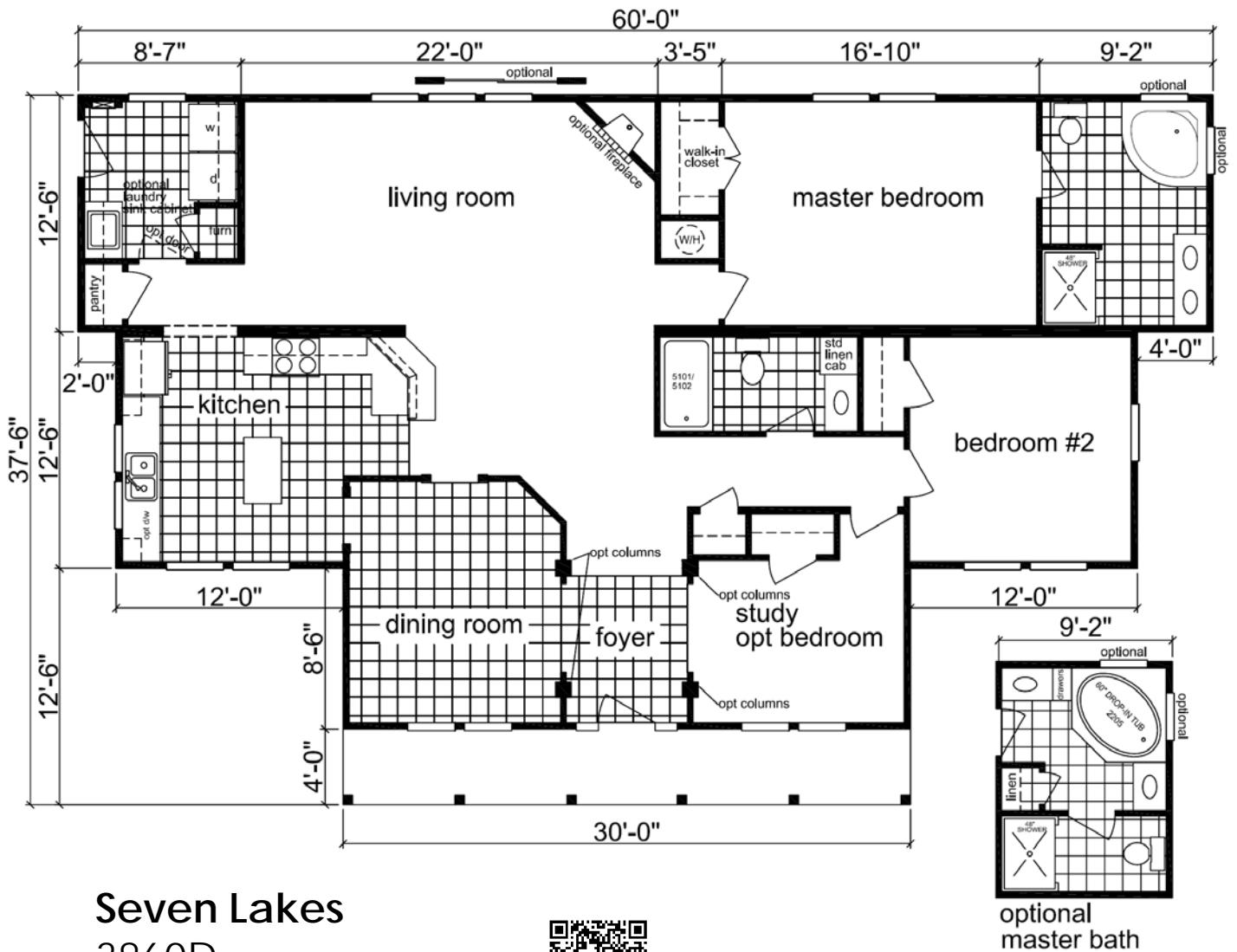




**Laurel Hill**  
**3860C**  
 \*1813 sq ft  
 \*includes porch







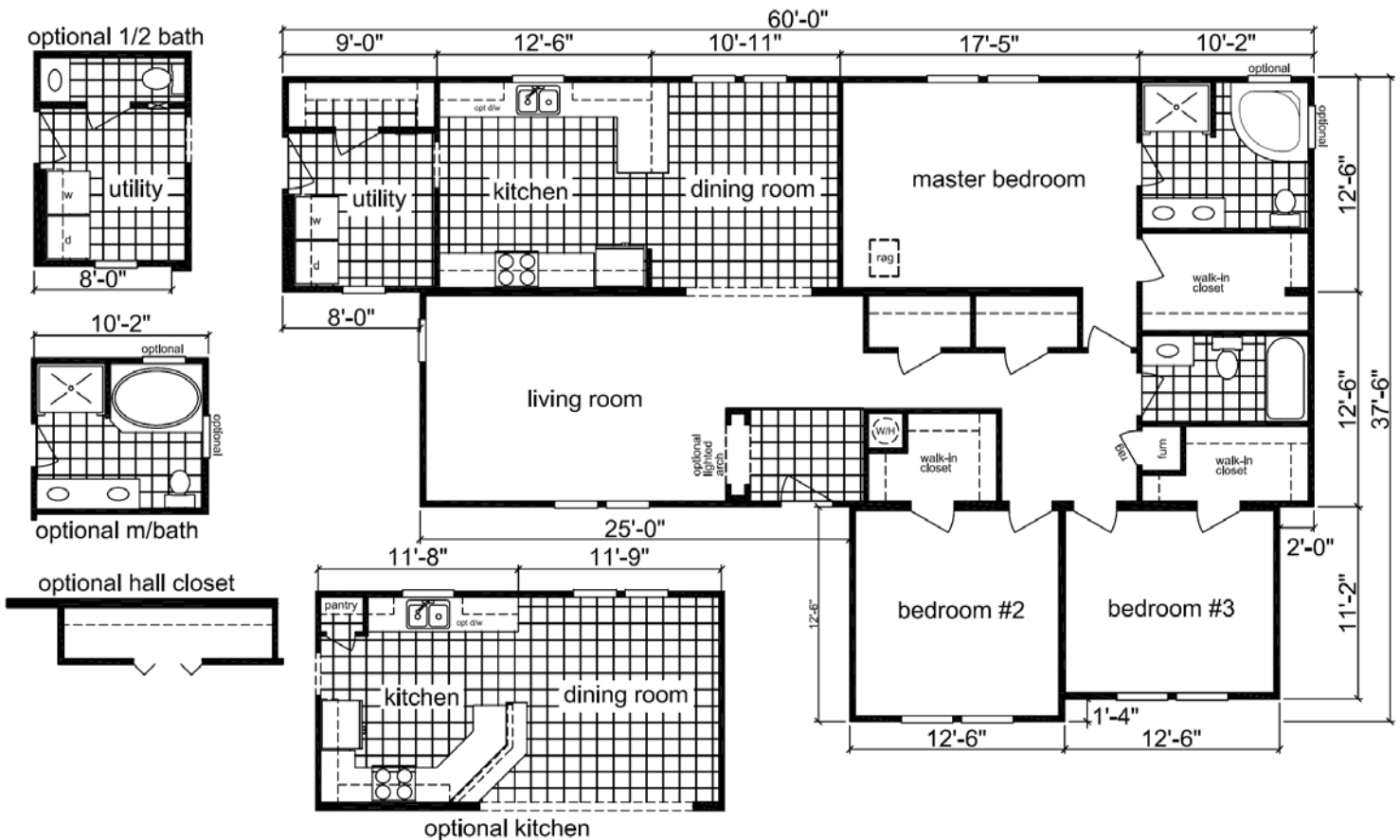
## Seven Lakes

3860D

\*1800 sq ft

\*includes porch





**Silverdale**  
3860E  
1713 sq ft





**Coleridge**  
**3864A**  
 \*1913sq ft  
 \*includes porch





# Austin-Hunt Series

## "Standard Building Specifications"

### Unseen Structural Features

- R 30 Blown Insulation in Ceilings
- R-13 Insulation in Walls
- R-19 Floor Insulation in Floors
- Wind Zone 110 MPH
- HVAC Vent Boots and Registers
- Furnace w/Straight Trunk Lines
- OSB Floor Decking 19/32"
- (2 X 8) Floor Joist 16" OC, (Off Frame)
- (2 X 6) Floor Joist 16" OC, (On Frame)
- (2 X 4) 8' Sidewalls 16" OC
- (2 X 4) Top & Bottom Plates
- (2 X 3) 8' Double Marriage Walls
- Engineered Roof Systems
- 5/12 Roof Pitch w/3 Tab Shingles

### Plumbing

- Water Shut-Off Valves
- Pex Plumbing System
- 50 Gallon Water Heater
- Exterior Frost-Free Water Faucet  
(1 @ STD Location Per Plan)
- Whole House Water Shut-Off
- Washer Hook-Up

### Baths

- 48" Fiberglass Shower, M Bath (Per Plan)
- 54" Fiberglass Tub, M Bath (Per Plan)
- 60" Fiberglass Tub/Shower, Bath 2
- 30" High Lavatory(s) in M Bath
- 30" High Lavatory in Bath 2
- Towel Bar/Tissue Holder All Baths
- Dual Lever Bath Faucets
- China Lavatories in Baths
- Laminate Backsplash, Self Edge, & Countertops

### Exterior Features

- D5 Park Side Vinyl Siding
- 15" Raised Panel Shutters (Front Door Side)
- 7/16" OSB Wrap Exterior Walls
- 36" 6 Panel Front Door w/No Storm
- 36" 6 Panel Rear Door w/No Storm  
(Per Plan)
- 12" Eave Overhangs (All Sides)
- Insulated Windows w/Grids
- House Wrap
- 25 Year 3 Tab Shingles

### Kitchen

- 30" White Coil Top Range
- 18 CF White Refrigerator w/Icemaker
- Tapered Wood Range-hood
- Dual Handle Faucet
- Stainless Steel Double Sink
- Laminate Backsplash, Self Edging & Countertops
- 30" Overhead Cabinets w/Matching Cove Molding
- Flat Panel Cabinets (Belwood Oak 2 Colors or Cambridge Birch 3 Colors)
- Kitchen Island (Per Plan)

### Interior Appointments

- 5/8" Sheetrock Ceilings w/Stipple Finish
- (2 X 3) Interior Wall Construction
- 6 Panel Interior Doors
- Mortised Door Hinges
- Molded Closets
- 2 1/4" Crown Molding
- 3" Baseboard Molding
- 2 1/4" Window/Door Casing
- Metal Shelf over Washer/Dryer
- Finished 1/2" Sheetrock Thru-out
- Round Door Knobs

### Electrical

- Brushed Nickel Light Fixtures
- Light Fixtures In All Bedrooms
- Ceiling Light in Dining Room
- White Exterior Light @ Frt. Door
- White Jelly Jar Light @ Rear/End Entry Door
- Exterior Electrical Outlets (@ Exterior Doors)
- 200 AMP Panel Box
- Smoke Detector Systems
- Dryer Hook-up

### Flooring

- 15 oz. Mantra Carpet w/ Pad & Tack Strip (Shipped Loose)
- 6 lb. Re-Bond carpet Pad
- 16" x 16" Nafco Flooring in Designated Areas (Per Plan)

## Popular Options

- On Frame Option
- 130 MPH Wind Zone
- Vent-less Propane Gas Fireplaces
- Perimeter Floor Registers
- 7/12 Roof Pitch 24" OC
- Upgrade Vinyl or Hardi Board Siding
- Upgrade Faucet Package

- 30 Yr. Architectural Shingles
- Deluxe Front Door(s)
- Sliding Glass Door(s)
- Deluxe Chandelier
- Recessed Can Lights
- Cloud Fluorescent Lights
- Pendant Lights
- 1" Mini Blinds

- Ceiling Fans
- Ceramic Backsplash
- Bull Nose Edging
- 25 oz. New Day Carpet
- 25 CF Side By Side Refrigerator
- Dishwasher
- Microwave



**Building A Better Home...**

We continuously strive to improve our homes and reserve the right to change specifications without notice

[www.HBSHome.com](http://www.HBSHome.com)

**Holmes Building Systems, LLC.**  
2863 Plank Road, Box 520 \* Robbins, NC 27325  
Ph: 910.948.2516 \* Fax: 910.948.3045

# Popular Options

## Ceramic Accents

### Designer Kitchens



### Fireplaces

### Glamour Bathrooms



### Archways and Columns

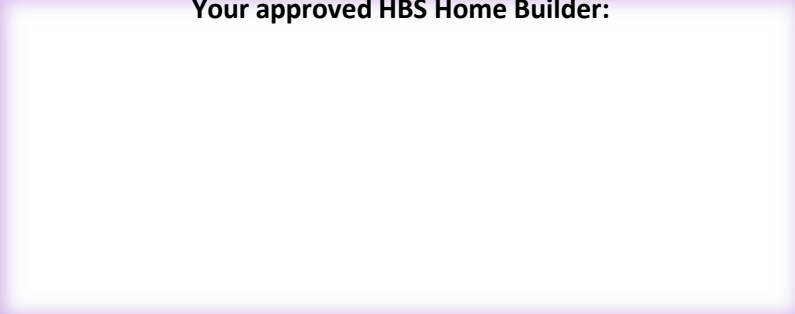
### Spacious Utility Areas







Your approved HBS Home Builder:



*Building A Better Home...*

**Holmes Building Systems, LLC. 2863 Old Plank Rd. Robbins, NC 27325**  
**[www.HBS home.com](http://www.HBS home.com)**